

**STEEL / ALUMINIUM HANDBALL GOALS
COMPETITION WITH FOLDABLE ARCHES**

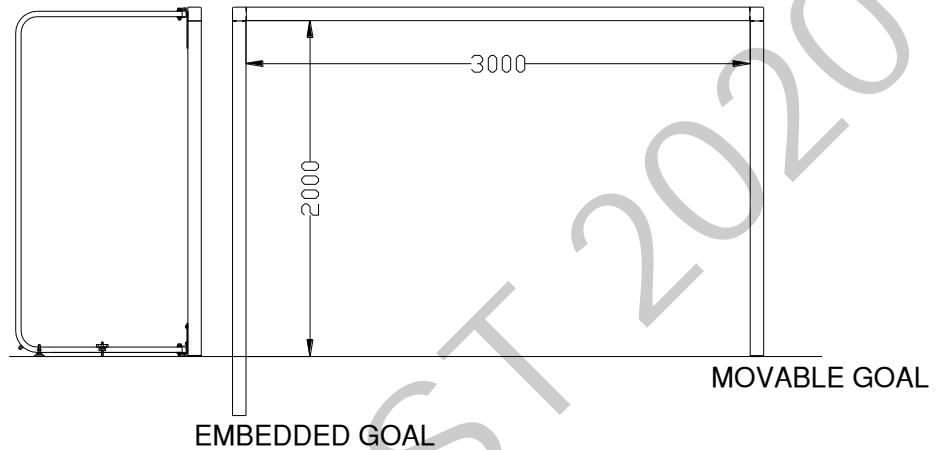
DOC N° :

NDM_HB02N

Conform to :

NF EN 749

Ref : HB02N212BI/BV/MBI / HB02N213BI/BV/MBI
HB02N301BV/BI / HB02N302BV/BI

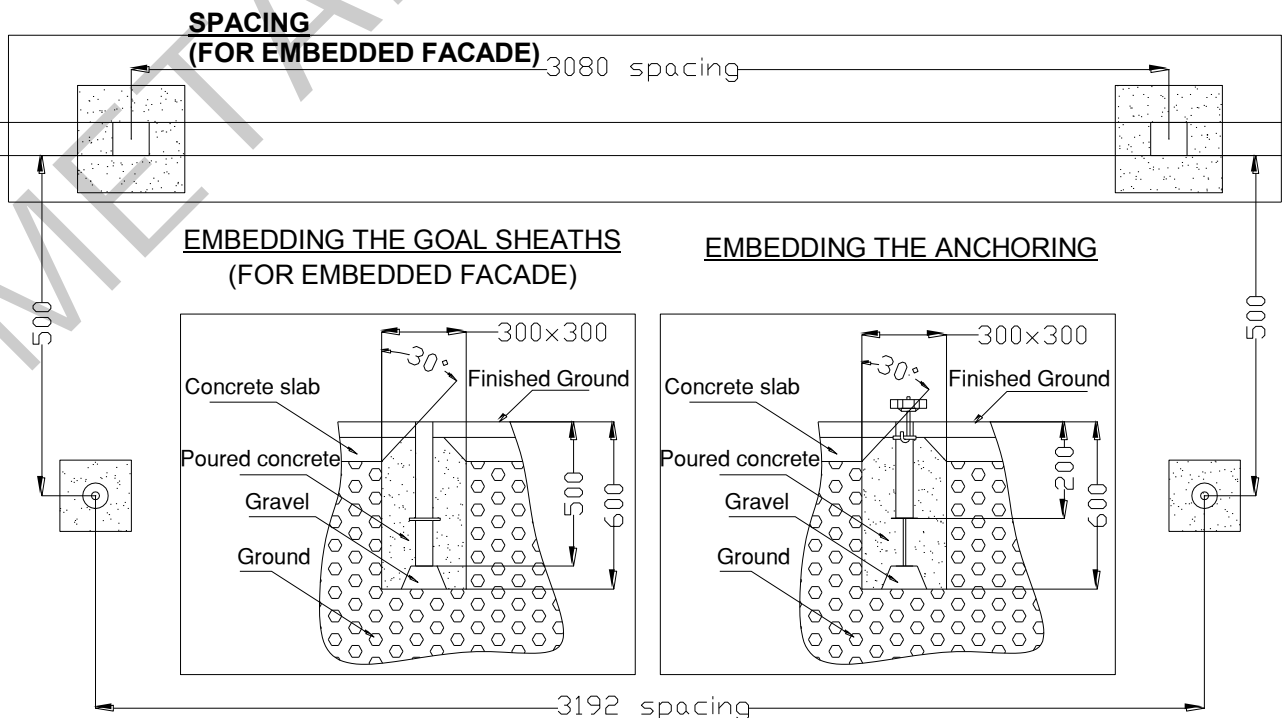


**WHEN IN USE OR
WHEN IN STORAGE
THE GOALS MUST
BE ANCHORED FOR
THE SAFETY OF THE
USERS**

Warning :

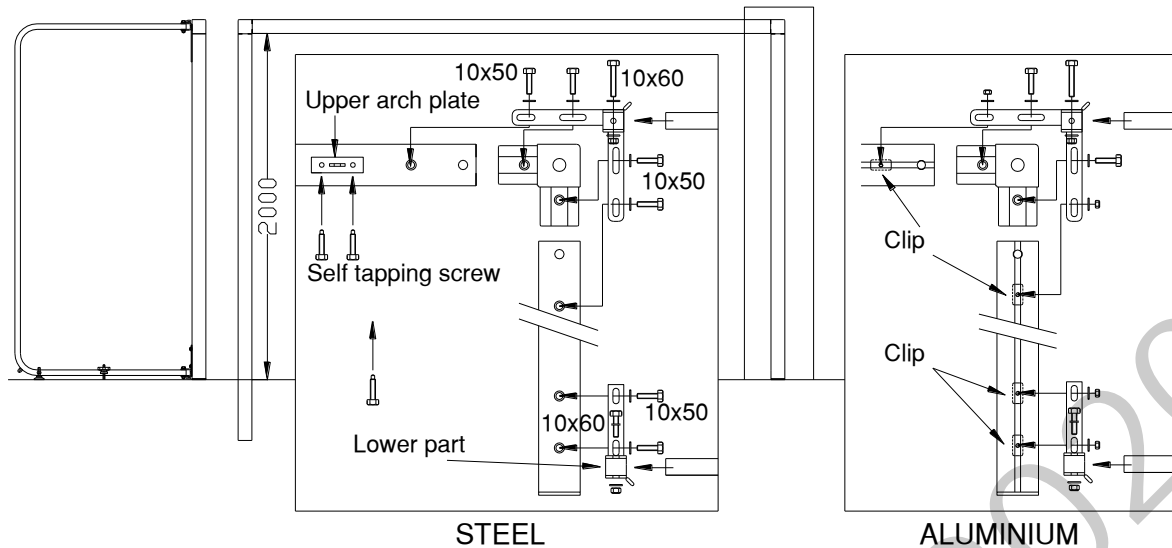
- Each time the equipment is installed, it is essential to check the stability and strength of the goal visually and manually.
- The equipment must always be secured during use and be made unusable during storage.
- The equipment must be serviced by the owner to ensure it complies with safety requirements at all times.
- The owner must set up a periodic inspection and servicing schedule for the equipment.
- A log must be kept for each site, recording the date and result of the inspections and checks performed.
- The owner or operator must ensure that users are unable to access any equipment which does not comply with the safety requirements.
- Do not use this equipment for any purpose other than that for which it was originally designed.
- Do not hang from, climb up or swing on this equipment.

BUILDING OF THE CONCRETE SLABS :



ASSEMBLY :

NDM_HB02N



- Fit the posts and the crossbar onto the junctions. Place the brackets/lower parts and fix using the M10x50 screws + Ø10 washers (plus M8*25 cleats + washers + M8 locknuts for the aluminium goals).

* For the aluminium goals, first slide on 3 cleats and 6 hooks per post and 6 cleats and 9 hooks per crossbar.

-Fit the arches then fix onto the façade using the HM10x60 screws, washers, nuts.

- Adjust the arches using the support bars and arch support plates: cleats for aluminium goals, pre-drilling Ø4.5 + self tapping screws for Aluminium goals.

Packing :

Parcel N°	Type of equipment	MOBILE STEEL COMPETITION HANDBALL		SLEEVE INSTALLATION STEEL COMPETITION HANDBALL		MOBILE ALUMINIUM COMPETITION HANDBALL		SLEEVE INSTALLATION ALUMINIUM COMPETITION HANDBALL	
		Size mm	Weight Kg.	Size mm	Weight Kg.	Size mm	Weight	Size mm	Weight kg.
1/6	2 Crossbars	3030x200x120	30.50	3030x200x120	30.50	3030x200x120	13.20	3030x200x120	13.20
2/6	2 Posts	2100x200x120	20.95	2350x200x120	24.60	2100x200x120	8.95	2350x200x120	10.15
3/6	2 Posts	2100x200x120	20.95	2350x200x120	24.60	2100x200x120	8.95	2350x200x120	10.15
4/6	2 Net supports	2000x1000x70	12.90	2000x1000x70	12.90	2000x1000x70	12.90	2000x1000x70	12.90
5/6	2 Net supports	2000x1000x70	12.90	2000x1000x70	12.90	2000x1000x70	12.90	2000x1000x70	12.90
6/6	Accessory parcel: - 4 Steel Ø60 anchor boxes - 4 M10x115 anchor hooks - 12 M10 locknuts - 4 Tightening knobs - 24 HM10x50 screws - 8 HM10x60 screws - 40 Ø10 Washers - 4 Brackets (2L + 2R) - 4 Foldable HB Lower parts - 4 arch support plates - 8 8x38 self tapping screws - 4 Stabilisation jacks - 4 steel flats + bolts - 4 HB junctions 80*80 supplements for aluminium goals : - 42 clip-on hooks - 24 M8x25 cleats - 24 Ø8 Washers - 24 M8 locknuts - (only 8 HM10x50 screws) - (no 4.8*38 self tapping screws) supplement for embedded goals: - 4 Aluminium sheaths 80x80 - 4 80*80 aluminium caps	500x210x210	20.15	600x500x400	24.15	500x210x210	20.65	600x500x400	24.65

Note for single block façade goals:

- The posts and crossbar are replaced by the single block façade
- No junctions



Required tools:

- Size 13-16 wrenches
- 1 mallet



- 110.05 Kg / pair of steel embedded goals
- 112.05 Kg / pair of steel mobile goals
- 63.75Kg / pair of aluminium embedded goals
- 61.75 Kg/ pair of aluminium mobile goals