


Attention!

- Do not overload the item!
- There is a risk of tipping over if handled improperly!
- Avoid contact with chemicals, especially acids!
- Sharp edges can damage the surface!
- Protect the device from moisture!
- Only suitable for indoor use!
- It is best to store the product in a locked room with a temperature of at least 15°C and a maximum humidity of 65%!
- The transport wheels are only intended for transporting the unloaded gymnastics bench. No warranty is provided in case of overloading.

Modification of Products:

Any kind of modification will compromise safety and result in the loss of warranty!

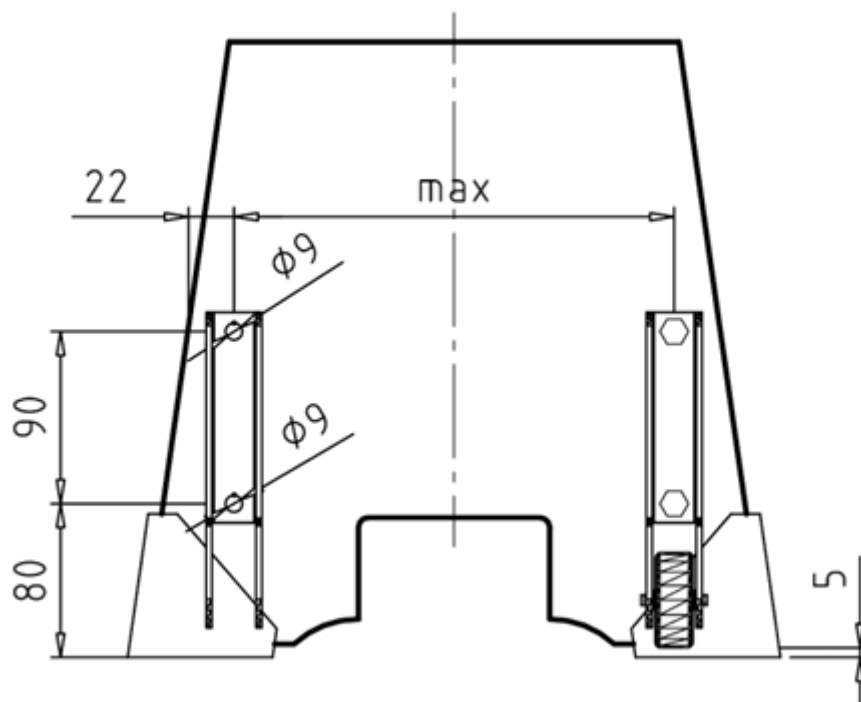
Assembly

Required tools: Wrench SW 13, Drill $\varnothing 9$

Required number of people: 1

Required time: 30 minutes

Position	Quantity	Description
1	2	Roller
2	4	Flat round head screw with square neck M8x45
3	4	Lock nut M8 DIN 985



Assembly Step 1

Drill four holes with a diameter of 9 mm in the gymnastics bench foot, as shown in Figure 2. The distance between the rubber wheel and the bottom edge of the gymnastics bench foot should be approximately 5 mm (control measurement). Ensure that, to reduce the risk of tipping during transport, the transport wheels are positioned far out at the edge of the gymnastics bench foot (with the hole approximately 22 mm from the edge). However, the rolling device should not protrude from the contour of the gymnastics bench foot!

Assembly Step 2

Now insert the flat round head screws from the inside into the hole in the gymnastics bench foot, place the roller body on the outside, and secure it with the lock nut.

Instructions for Regular Inspection:

- Perform a visual inspection at regular intervals.
- Due to our continuous quality control of the products, technical changes may occur, which could lead to slight deviations in the instructions.
- Regularly check the screw connections to ensure they are securely tightened.
- Inspect the item for any damage and replace worn parts as needed.
- Check the condition of wooden elements, as splintering or other signs of wear may occur with use.
- Check the condition of the rubber caps/feet, as they may wear out over time and no longer serve their intended purpose.